

CR-12 Flight Training Systemtm

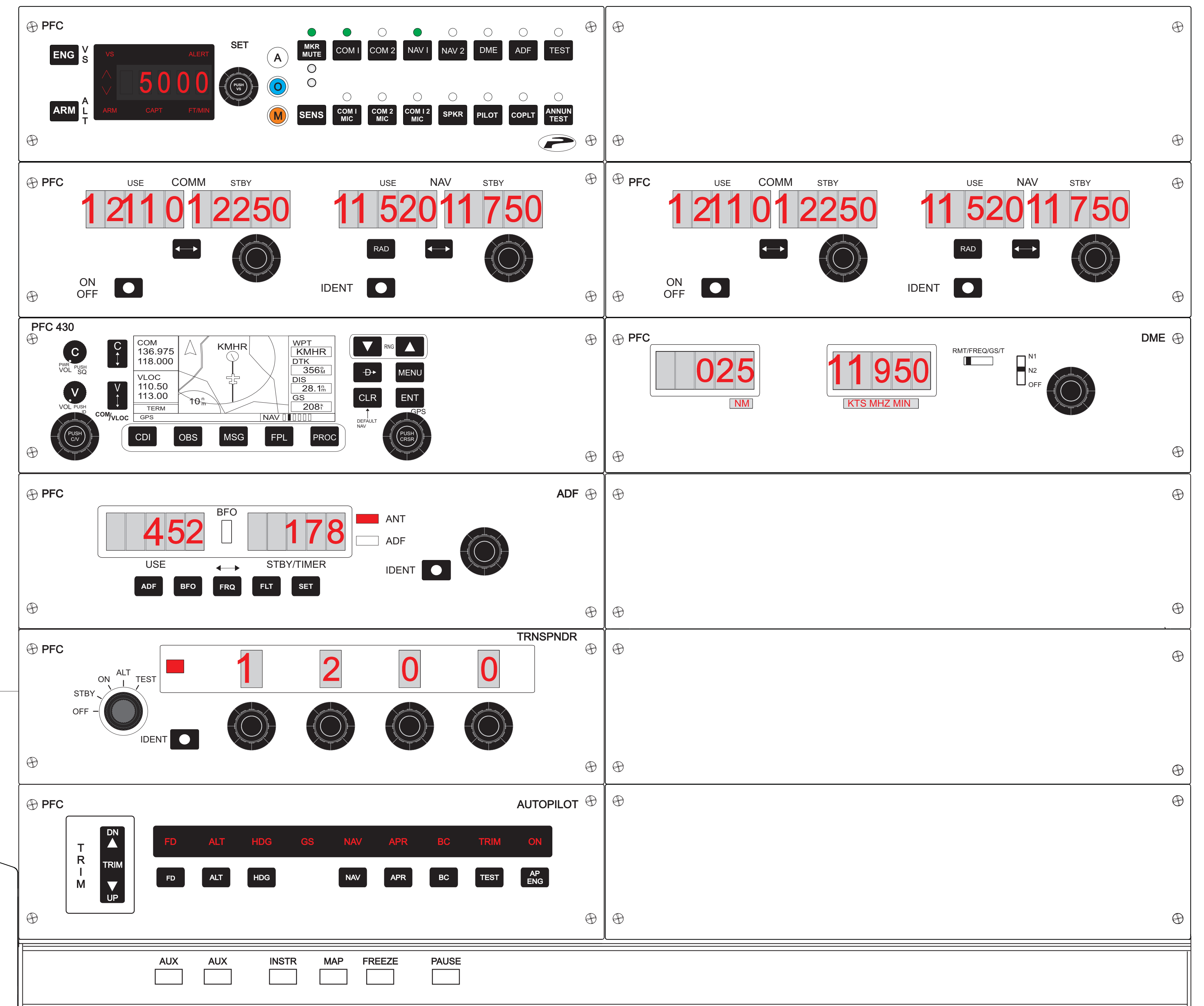


C2Professional Flight Console, Digital Avionics (Enhanced) and Cirrus Rudder Pedals

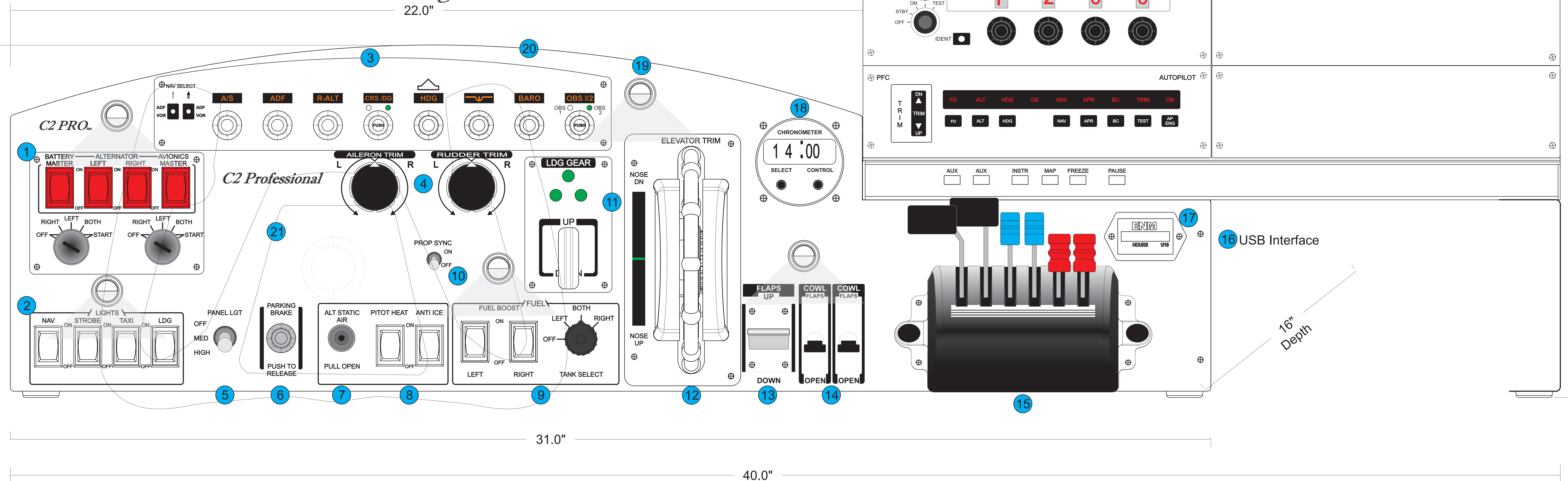
Console Features

- 1 Master Panel
Battery
Alternator 1
Alternator 2
Avionics Master
Magneto Switch Left
Magneto Switch Right
- 2 Lights Panel
NAV, Strobe, Taxi and Landing
- 3 RIC (Remote Instrument Console)
8 encoders and 2 pushbuttons
to control on screen instruments
- 4 Aileron and Rudder Trim Controls
- 5 Panel Lights Switch
3 Position Toggle Switch or Rheostat
- 6 Parking Brake Switch
- 7 Alt Static Air Switch
- 8 Pitot Heat Switch
Anti Ice Switch
- 9 Fuel Panel
Fuel Boost Pump 1
Fuel Boost Pump 2
Fuel Tank Selector
- 10 Prop Sync Switch
- 11 Landing Gear Switch
Gear Position Lights
- 12 Elevator Trim
Manual and Electrically Controlled
Couples to Autopilot, LED position
indicator
- 13 Flaps Switch
- 14 Cowl Flaps Switches
- 15 Throttle Quadrant
(interchangeable with 15 different combinations)
- 16 USB Interface
- 17 Hobbs Meter
- 18 Digital Clock/Stop Watch
- 19 Panel Lights
- 20 Steel Construction
Powder Coated Chassis
Epoxy Silk Screening
- 21 Cast Aluminum Yoke
Elevator Trim Switch
A/P Disconnect Switch
Pitch Sync Switch

Avionics Stack

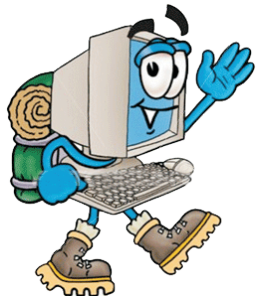


C2 Professional Flight Console



CR-12/ProPanel

Wiring Diagram
Typical Installation
Enhanced Visual System
(your setup may vary)



Installation notes:

- (1.) Unpack and inspect components for damage
- (2.) Place console/equipment on a firm flat surface
- (3.) Plug in the console and components as shown per diagram below
- (4.) Leave the Battery and Avionics Master Switches in the **ON** position
- (5.) Install the PFC Plugin (X-Plane only) (already loaded on complete systems provided by PFC)
- (6.) Install the PFC.DLL (driver) provided (for **Microsoft Flight Simulator use only**)
- (7.) Refer to the PFC.DLL documentation for hardware calibration (**Microsoft Flight Simulator use only**) or the Operations manual for X-Plane hardware calibration

ProPanel notes:

See ProPanel installation sheet for additional information

